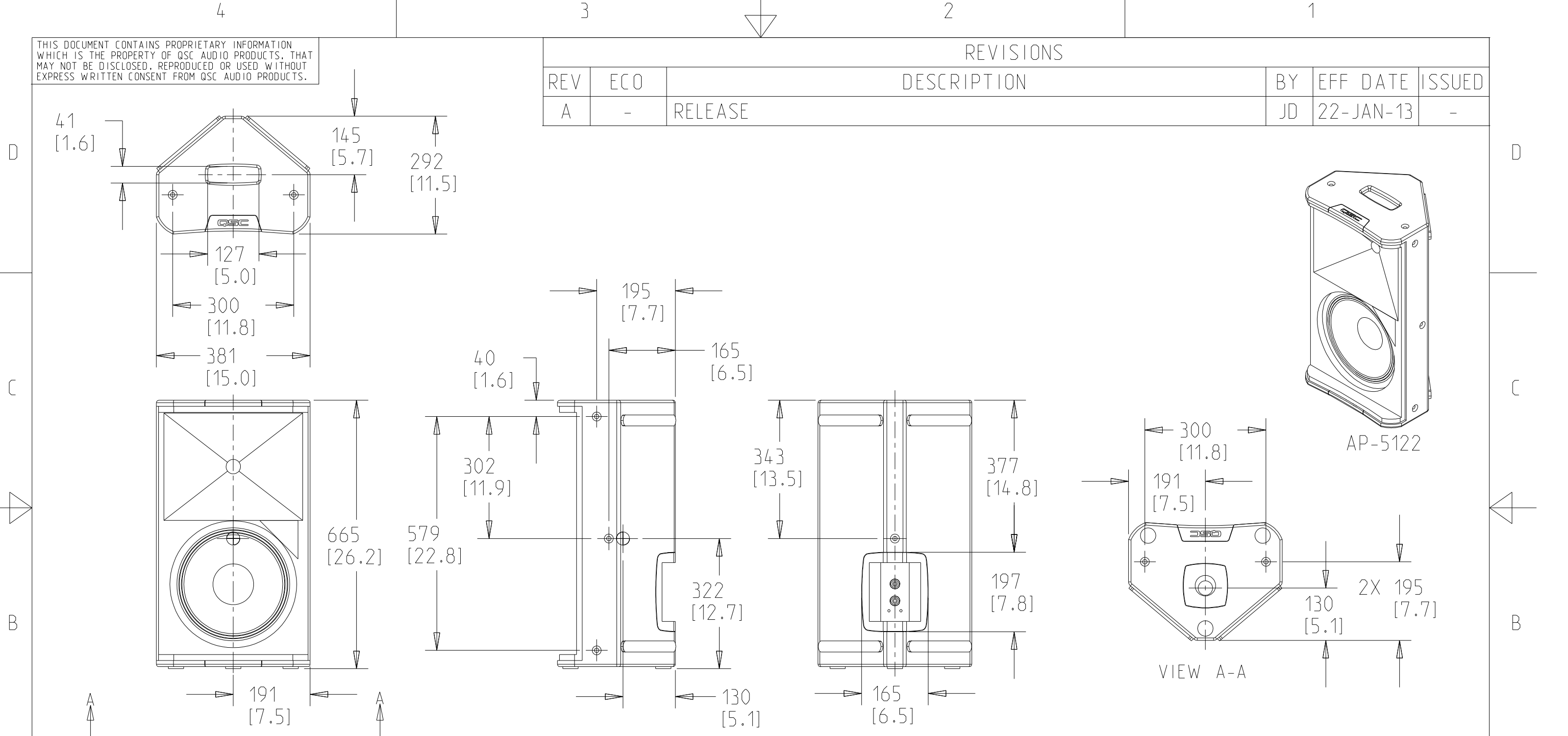


THIS DOCUMENT CONTAINS PROPRIETARY INFORMATION WHICH IS THE PROPERTY OF QSC AUDIO PRODUCTS, THAT MAY NOT BE DISCLOSED, REPRODUCED OR USED WITHOUT EXPRESS WRITTEN CONSENT FROM QSC AUDIO PRODUCTS.

REVISIONS					
REV	ECO	DESCRIPTION	BY	EFF DATE	ISSUED
A	-	RELEASE	JD	22-JAN-13	-



5. PARTS ARE SYMMETRICAL ABOUT CENTER LINES UNLESS OTHERWISE NOTED.
  4. SYMBOL ⊕ INDICATES CENTER OF BALANCE.
  3. SYMBOL ⊙ INDICATES SUSPENSION POINT, 11 TOTAL: M10-1.5 THD.
  2. TOLERANCES (MM):  $X \pm 5$ , ANGLES:  $\pm 1^\circ$ .
  1. NET WEIGHT APPROX. 29.5 KG (65 LBS)
- NOTE: UNLESS OTHERWISE SPECIFIED

UNLESS OTHERWISE SPECIFIED DIMENSIONS IN MILLIMETERS (IN)  
TOLERANCES ARE:  
DECIMALS .X±.5(.02)    DECIMALS .XX±.25(.010)    ANGLES ± 1/2  
DEBURR EDGES .25 (.010) R MAX

MATERIAL

FINISH

APPROVALS		DATE (DD-MMM-YY)
DRAWN	J. DELARM	19-NOV-12
CHECKED	P. SANCHEZ	21-JAN-13
MFG ENG	N/A	-
QA CHECK	N/A	-
DRAWING INFO: FG-012220-2D.A.0		SIZE: B
MODEL INFO: FG-012220-3D.A.0		CAGE CODE: 00PW4

		QSC AUDIO PRODUCTS, LLC 1675 MACARTHUR BOULEVARD COSTA MESA, CA 92626	
SPEAKER, FINISHED, AP-5122M			
SIZE	CAGE CODE	DRAWING NO.	REV
B	00PW4	FG-012220-2D	A
SCALE:	0.109	DO NOT SCALE DRAWING	SHEET 1 OF 1