



unIFY Control Panel

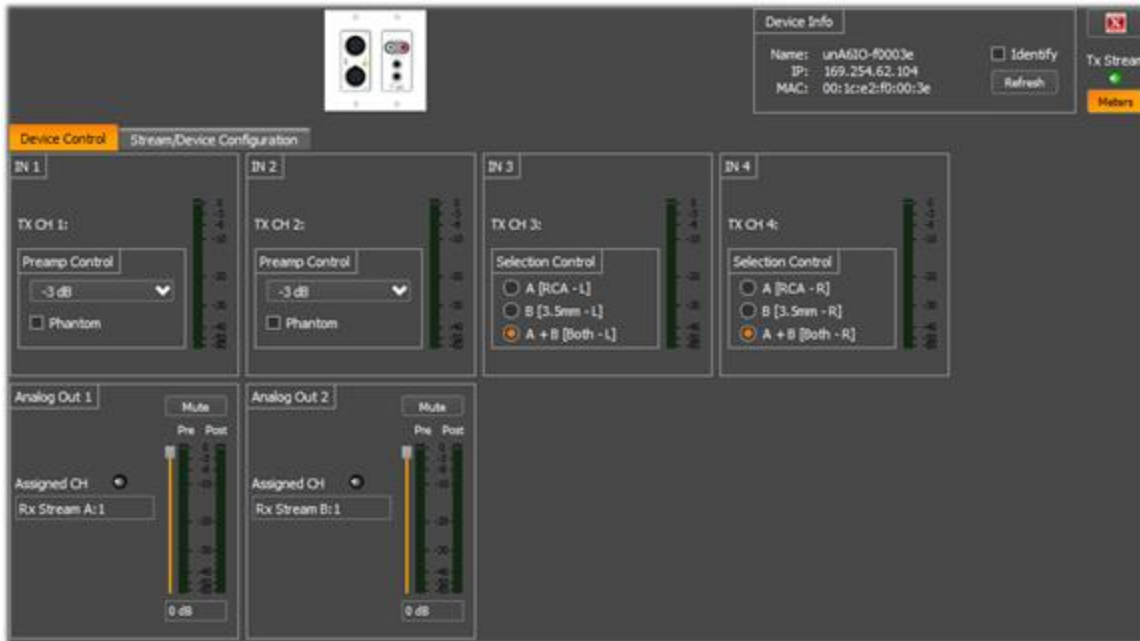
unA6IO Configuration



QSC, LLC • 1675 MacArthur Boulevard • Costa Mesa, CA 92626
Ph: 800/854-4079 or 714/957-7100 • Fax: 714/754-6174

© 2020 QSC, LLC all rights reserved. QSC and the QSC logo are registered trademarks of QSC, LLC in the U.S. Patent and Trademark office and other countries. All other trademarks are the property of their respective owners. Patents may apply or be pending.

www.qsc.com

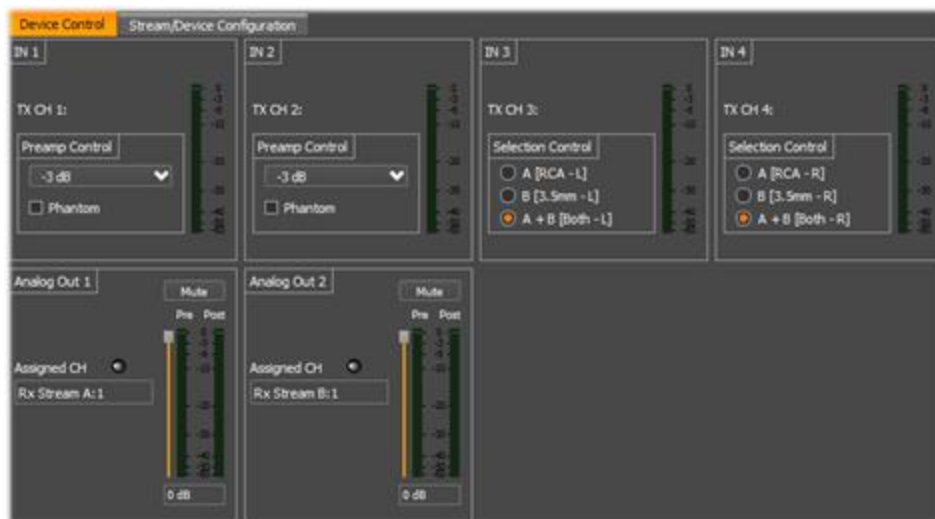


The configuration form for the unA6IO is organized into the following key sections:

- Device Control – Comprises the analog input audio parameters
- Stream/Device Configuration – Comprises of the network audio parameters

**Note: Any changes made to device control settings will only persist until power is cycled on the device. To retain the settings, they must be stored to Preset 0 using the “Save Presets” feature within unIFY Control Panel.*

Device Control



Preamp Control

The Preamp Control section allows the user to adjust the microphone preamp gain settings and phantom power states for the corresponding inputs.



Input Select Control

The unA6IO features an input selection option for the line level analog inputs routed to Dante™ transmitter channels 3 and 4. To select the active input, click on the desired radio button in the Input Selection control.

The selectable options are:

- Input A (RCA Inputs)
- Input B (3.5mm TRS input)
- A+B (Mono sum of both inputs A and B)

Volume Control

The volume control allows the user to adjust the audio level of the corresponding analog output. Volume settings are between 0 and -60dB.

**Note: The volume control goes not apply any gain to the output signal. It is only an attenuation only control.*

Mute Control

The mute control allows the user to mute/unmute the corresponding analog output.

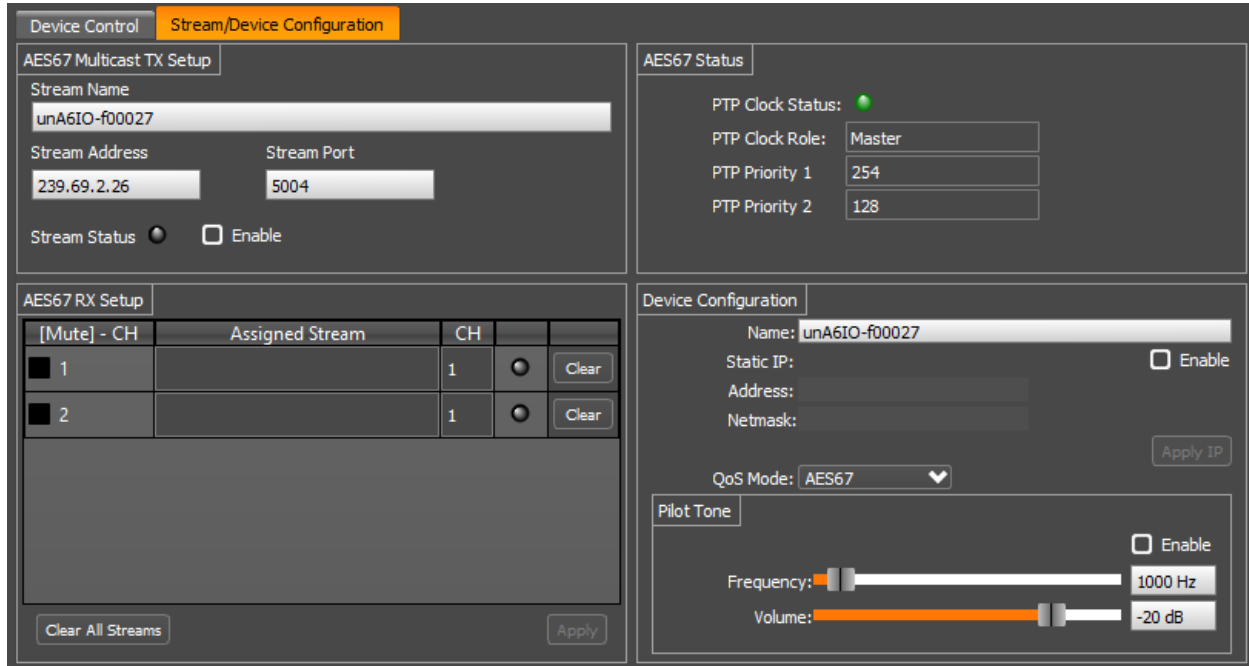
RX Channel Assignment

This text field reports the currently assigned AES67 transmit channel assigned to the corresponding output. To change the channel being supplied to a particular output, use the “AES67 Rx Setup” section on the “Stream Configuration” tab.

Metering

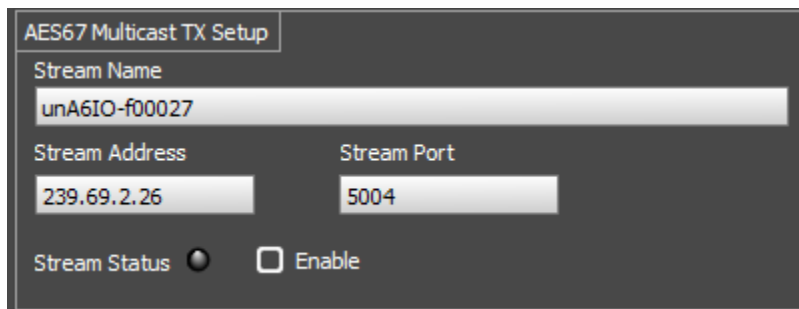
All unA6IO units have an option that allows metering. The meters are shown for both inputs and outputs and the output meters show both pre- and post- output volume/mute control levels but they will only operate when the metering function is enabled. The metering data is disabled by default. It is recommended that the metering only be turned on for diagnostics/debug purposes but is then turned off for normal operation especially if there are multiple units on the network.

Stream Control



The stream control tab shows the various settings to configure both transmit streams for the unA6IO and receive streams to the unA6IO. There are also some device settings such as device name and IP address configuration.

AES67 TX Setup



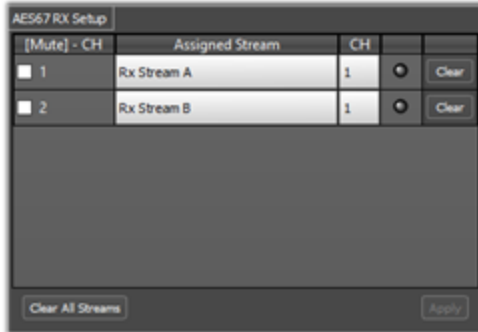
The parameters in this section are used to define the transmit stream from this device. By default, the audio transmitter is turned off. The stream comprises of five channels. The first four channels are the audio from the local analog inputs in order and the fifth is a diagnostic pilot tone.

Each stream has a name to identify it and a multicast IP address that the stream uses. The name is 32 characters long and by default is the name of the device itself. This can be changed if required but needs to be unique. The stream IP address is the multicast IP address that the stream will be sent to. This IP address must be a unique multicast address on the network.

**Note: The software does not check the name or IP address is unique and it therefore up to the user to ensure that these values are not used again on other devices.*

Check the “Enable” option to setup the transmit stream. When active and correctly working, the stream status indicator will show green.

AES67 RX Setup



The AES67 Rx setup section allows the user to see and/or select which stream and specifically which channel within a stream is allocated to each analog output. For each output, the current settings for assigned stream and channel are shown, as well as an indication if the assigned stream is active and also if that output is muted or not (the mute control is a duplicate of the output mute control on the Device Control tab).

Audio channels may be assigned to an output in two ways:

1. The drag and drop method - By clicking the “+” sign next to a stream name in stream list on the lower left hand side of the GUI, the stream will expand to show its individual channels. With the stream expanded, click and drag that exact channel from the desired stream and drop it onto the desired output. Doing so will populate both the assigned stream and channel number fields for that output channel.
2. Manually – Manually type the stream name and channel number in the boxes provided

Once the correct streams have been allocated, click the “Apply” button to apply the changes to the unit. If the stream is being received correctly, the stream indicator will turn green. If a stream is allocated but not received for some reason, the indicator will show red.

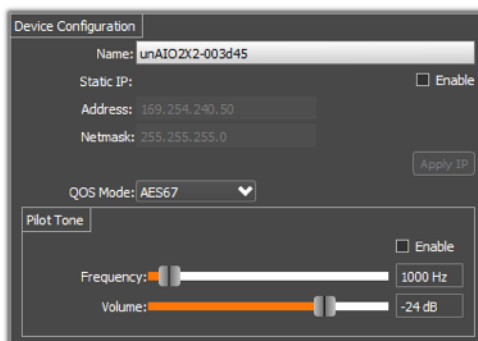
AES67 Status



The fields indicated in this section are for monitoring purposes only. The PTP Clock Status indicates if the device is sync'd to the main system clock. A green indicator show that it is. The clock role indicates if the device has been elected to be a clock master or is just a clock slave. The two priority fields show what the device priorities are set too which form part of the clock

master election process.

Device Configuration



The device configuration shows the various device wide settings. This includes the devices name and IP address, and the settings for the pilot tone.

The device name defaults to unA6IO-xxxxxx where xxxxxx is the last six digits of the devices MAC address. The name can be changed and changes will be applied by pressing “Enter” or by selecting a different control than the device name edit box.

***Note:** Changing the name will force a reboot of the device.



The device IP address configuration indicates the current IP setup. The devices IP can be configured as either static or dynamic. Changes to the setup are applied using the “Apply IP” button.

Q-LAN/AES67 audio and Dante™ audio require differing QoS settings and switches can only be configured to deal with traffic QoS in one way. In order to make sure that QoS settings on the switch can apply equally to both Q-LAN/AES67 and Dante™ traffic, the QoS mode can be specifically selected. Use the following table to select an appropriate value.

Network Traffic	QoS Setting
Q-LAN only	PTPV2:46 Audio:34 (AES67)
Q-LAN + AES67	PTPV2:46 Audio:34 (AES67)
Dante™ only	PTPV2:56 Audio:46 (Dante™)
Dante™ + Q-LAN	PTPV2:56 Audio:46 (Dante™)
Dante™ + Q-LAN + AES67	PTPV2:56 Audio:46 (Dante™)

The pilot tone settings are used to configure an additional diagnostic tone channel that is included in the transmit stream. If enabled, an internally generated sine wave of the given frequency and volume is add to the transmit stream in addition to the two analog input audio channels.