



# unIFY Control Panel

## Synapse D32o Configuration

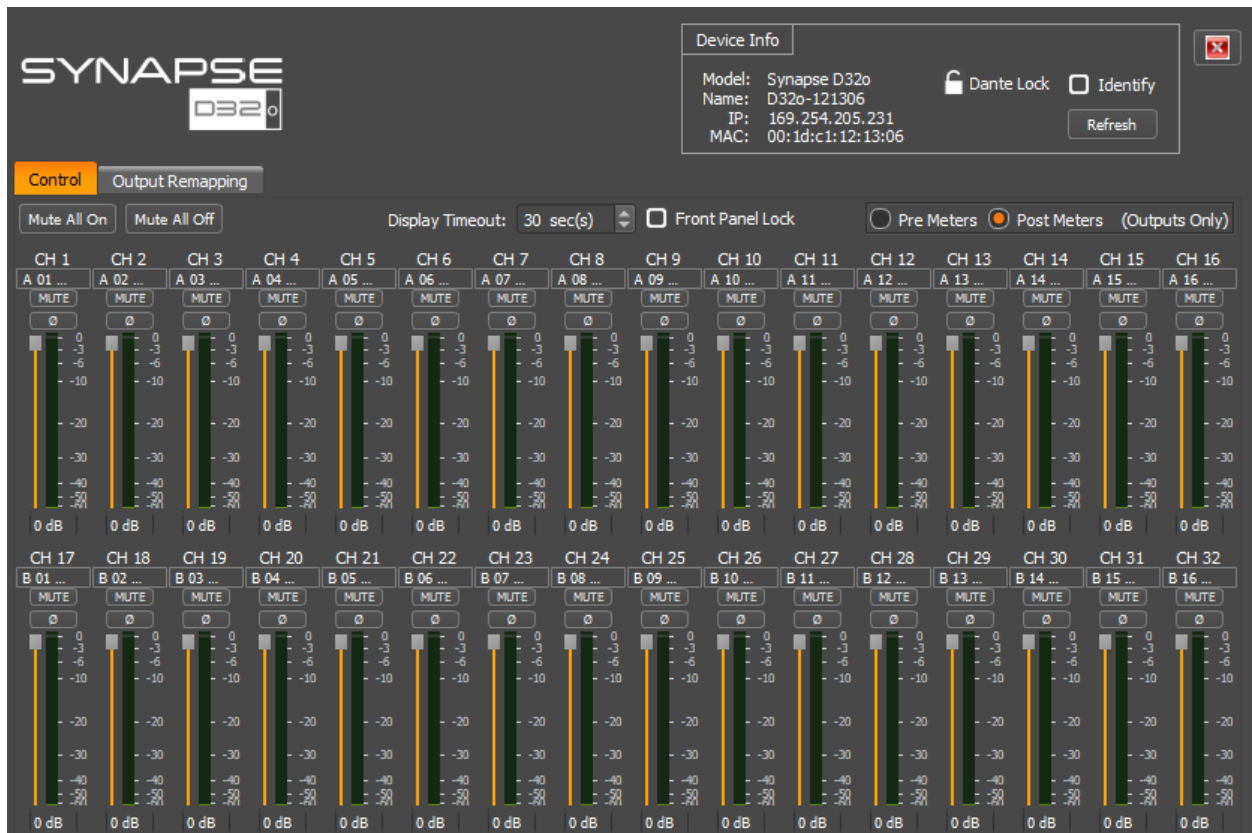


QSC, LLC • 1675 MacArthur Boulevard • Costa Mesa, CA 92626  
Ph: 800/854-4079 or 714/957-7100 • Fax: 714/754-6174

© 2020 QSC, LLC all rights reserved. QSC and the QSC logo are registered trademarks of QSC, LLC in the U.S. Patent and Trademark office and other countries. All other trademarks are the property of their respective owners. Patents may apply or be pending.

[www.qsc.com](http://www.qsc.com)

## Control



### Mute All On/Off

Clicking the “Mute All On” activate the mute function on all 32 outputs simultaneously. Conversely, the “Mute All Off” deactivates it. Individual mute states are not maintained when these functions are used.

### Polarity Invert

Activating the "Ø" button activates the signal invert. This applies a 180 degree phase shift to the output signal on that channel.

### Display Timeout

Clicking the up/down arrows will adjust the time of inactivity before the display goes into sleep mode. The default setting is 30 seconds.

### Front Panel Lock

Activating the “Front Panel Lock” option will prevent users from changing the monitoring settings from the front panel of the D32i. When enabled, the monitor facility is locked to whatever channel was selected when the lock is applied.

## Dante™ TX Channel Name

The Dante™ TX channel name is shown just below the channel number for each channel and represents the Dante™ transmit channel name as it appears on the Dante™ network for each analog input channel. The box is small so the entire name may not be displayed. To see the full name, hover over the name and a pop-up hint will appear showing the entire name.

*\*Note: This field is non-editable. To edit the channel names, use the device list view control or use Dante™ Controller.*

## Pre/Post Metering

The D32o has two modes of metering. Switching between these modes can be come any time using the appropriate radio buttons. The pre- metering mode shows the levels of the audio signals received directly from the Dante™ flows prior to any adjustments the D32o may make. Post- meters show the levels sent to the local outputs after all audio adjustments the D32o may make.

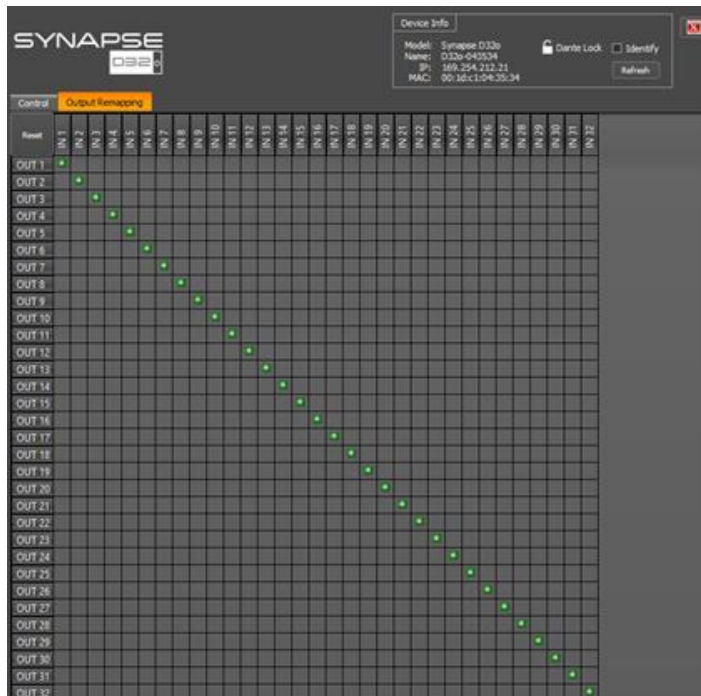
## Channel Mute

Each output has its own mute. The state of the button indicates its state with dark grey meaning the mute is inactive and orange indicating the mute is active. Click the button to change the mute state.

## Channel Volume

Each output has its own volume control. The slider is just to the left of the channel meter and is adjustable from a minimum of -60dB to a maximum of 0dB. To adjust the volume, click on the slider and drag it either up or down. Alternately, click in the text box below the slider and type in the desired level.

## Output Remapping



The D32o can have the Dante™ input channels remapped to customized analog outputs on the device. Changes are made by simply clicking the desired input/output selection on the grid. The green indicator will show the connection has been made. By default, the input channels are paired to their corresponding outputs of the same values.